




**clearvision**

**Open Source Solutions for Enterprise Configuration Management**

Presentation by Gerald Tombs – Clearvision

---

---

---

---

---

---

---

---

**clearvision** **Agenda**

- **Introduction**
- **Development Pressures**
- **Open Source offerings**
- **Who's using what**
- **Subversion & Mercurial history**
- **Hybrid World**
- **Collaboration**




---

---

---

---

---


---

---

---

**clearvision** **Introductions**


- Gerry Tombs – Technical Director, Clearvision CM
- Worked in software development for over 25 years, choosing to specialise in Change and Configuration Management for the last 15 years.
- Gerald joined Atria Software in 1993, working with ClearCase until 1997 when he left Rational Software to become the founder of Clearvision.



**Clearvision Company History**  
 Clearvision was established in 1997 and is the leading independent change and configuration management consultancy.

The first UK IBM Rational partner, Clearvision has offices throughout Europe and the USA. Clearvision work with clients throughout the world including global top 100 companies such as CitiGroup, HSBC, Barclays, Ericsson, Sony and more.

In recent years Clearvision have helped customers combine the power and reliability of IBM Rational change and configuration management solutions with the flexibility and low-cost of open source solutions.




---

---

---

---

---

---

---

---


**clearvision** Development Pressures

Everyone wants more quality, faster to market with little investment or spend.

At the same time Open Source solutions are starting to reach a very acceptable level of quality and acceptance

There are only a small hand full of OS project which become well accepted by commercial organisations e.g. Linux, Apache, Subversion, NetBeans, Eclipse, Open Office, ...

However there are x thousand OS projects and more than x million lines of code.

itSMF UK 

---

---

---

---

---


---

---

---

**clearvision** Who's using which Open Source solution

	SourceForge.net	JavaForge.net	Google.code
<b>Subversion</b>			
<b>Mercurial</b>	MoinMoin NetBeans.org	Intel – Linux SAGE	FreeBSD Open Solaris
<b>GIT</b>	RedHat	Rails Community	

itSMF UK 

---

---

---

---

---

---


---

---

**clearvision** Subversion & Mercurial

**Subversion**  
Started in February 2000 by Karl Fogel & (Jim Blandy), the author of CVS. The objective was to modernise CVS and correct all its misgivings, however be similar enough so CVS users could easily transition. The community very quickly took shape and in August 2001 produced the first usable version.

**Mercurial**  
First announced on April 19<sup>th</sup> 2005. Linux kernel project needed a replacement tool which catered for distributed VC. Written in Python, generally accepted as better than SVN for distributed development. Merging was better than SVN 1.4.x

itSMF UK 

---

---

---

---

---

---

---

---

**clearvision** Subversion - Overview

**What is Subversion?**  
**Open source replacement for CVS.**

**Features:**  
 Directory versioning    True version history  
 Atomic commits        Versioned metadata  
 Choice of network layers    Efficient branching and tagging  
 Consistent data handling    Easily integrated

**A rapidly growing version control tool on the market (estimated @ 220,000 users per month).**

**Stand alone CM tool - no overlaying process or change management capability.**

**Development started in 2000**  
 - Version 1.0 released in February 2004  
 - Version 1.5 released in June 2008

**iSMF UK** **BCS**

---

---

---

---

---

---

---

---

---

---

---

---

**clearvision** OS - Development Tools

Requirements	Change Management	Config Management (Control version)	Testing	Build & Deploy
xPlanner Story.Net Case Maker PTM	Trac Bugzilla BugTracker BugBye BTsys	Subversion Mercurial Git CVS	<a href="http://www.opensourcetesting.org/functionnal.php">http://www.opensourcetesting.org/functionnal.php</a>	Cruise Control Nant Draco.net BuildStudio

**iSMF UK** **BCS**

---

---

---

---

---

---

---

---

---

---

---

---

**clearvision** Development Tools - Commercial

Requirements	Change Management	Config Management	Testing	Build & Deploy
CodeBeamer Axosft Serena Rational <a href="http://www.la.atuk.com/tools/reg_mgmt_tools.html">http://www.la.atuk.com/tools/reg_mgmt_tools.html</a>	CodeBeamer Jira ClearQuest TrueTrack PVCS Tracker TeamTrack ...~25+	Subversion	Rational HP McCabe Parasoft	CodeBeamer Electric Cloud Build Forge Final Builder

The above commercial tools all integrate with Open Source Subversion

**iSMF UK** **BCS**

---

---

---

---

---

---

---

---

---

---

---

---

**clearvision**

**Open Source – Yes or No**

**clearvision**<sup>10</sup>

itSMF UK BCS

---

---

---

---

---

---

---

---

**clearvision** **Business Challenge**

All organisations (businesses and charities) must remain competitive and should regularly review their costs and productivity.

How has open source (OS) impacted cost and efficiency;

- OS licenses, not always, but generally free to use
- Subversion is;
  - based on 'Apache Open License', free to use
  - generally easier to implement
  - generally easier to administer
  - becoming widely used – less training required
  - registering bugs is very transparent
  - no compulsory annual maintenance

itSMF UK BCS

---

---

---

---

---

---

---

---

**clearvision** **Migration Challenge**

Many companies want to change but some have concerns regarding open source alternatives;

Concerns are:

- Transition cost outstripping existing maintenance costs
- Disruption to existing projects
- Present integrations (change management, build environment, IDE's, etc)
- Losing history
- Support
- Knowledge gap (training)
- No individual organisation to blame
- No individual organisation to insist features are added i.e. the size and wealth of a user (customer), has little impact on the community
- No guarantees the community will continue
- License challenges
- +

itSMF UK BCS

---

---

---

---

---

---

---

---

**clearvision** Reality of OS

I could almost guarantee every company here is using some open source either directly or indirectly

Who is using;

- Apache
- TomCat
- Linux
- Eclipse
- Open Office
- NetBeans
- IBM Rational tools
- HP Testing (Mercury)

itsmf UK **BCS**

---

---

---

---

---

---

---

---

**clearvision** Migration Options

When migrating to any new version Control tools the options are;

- Big Bang
- Gradual
- Hybrid

itsmf UK **BCS**

---

---

---

---

---

---

---

---

**clearvision** Hybrid World

Use both Subversion and vendor together and integrated

- No big bang transition
- Utilise the strengths of each tool
- Naturally evolves (under guidance) and eventually becomes the norm
- Reduces pressure on development teams and the business
- Cost effective
- Removes management 'no' arguments (roadblocks)
- Creates a real life, self fulfilling, justification
- Compatibility with Open Source world

itsmf UK **BCS**

---

---

---

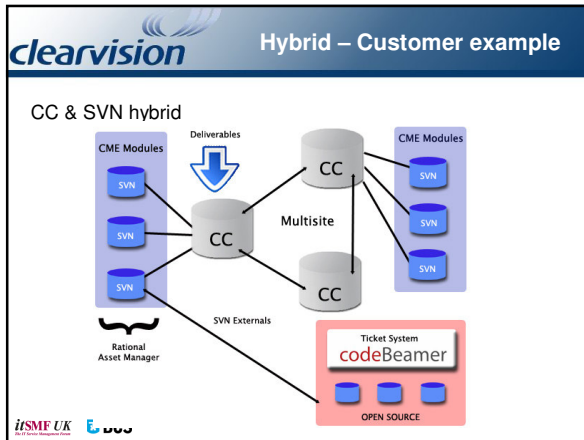
---

---

---

---

---




---

---

---

---

---

---

---

---

**clearvision** Why Hybrid?

Challenge	Solutions
Transition cost outstripping existing maintenance costs	Gradual approach reduces risks whilst reduces the need to renew all licenses
Disruption to existing projects	Transition at you own pace (as new projects or sub-projects start)
Present integrations (change management, build environment, IDE's, etc)	Subversion integrates with almost all commercial and OS development tools (sometimes better than commercial tools)
Losing history	No data loss so long as you retain a few licenses from existing tool. Migrate using a baseline of code base
Support	There are several companies offering OS support contracts. Good to have access to the community
Knowledge gap (training)	Considerable amount of 'help yourself' materials on the internet. Clearvision also has very structured training courses and Web Based Training
No individual organisation to blame	Yes and No. Take out a support contract! Provide a resource to contribute to the community. Use source code directly

itsmf UK BCS

---

---

---

---

---

---

---

---

**clearvision** ALM or Point tools

Over the past 12 months Clearvision has witnessed a real shift towards collaborative solutions which transparently sit on top of point tools.

Collaborative Tools bring;

- Distributed teams closer together
- Single interface integrating to many point tool solutions
- Wiki & comment overlays aid communication

Example tools include;

CodeBeamer, CollabNet CEE, GForge, IBM Team Concert, Atlassian, (Eclipse, NetBeans),

itsmf UK BCS

---

---

---

---

---

---

---

---

**clearvision** Customer Examples

Large Bank

- Using ClearCase for 10 years
- Use to have strict policy and process enforcement
- Now allows small development projects to use SVN
- SVN is now used for 30% of all projects
- SVN is selected for 80% of new project

South African company

- Used ClearCase for 4 years
- Challenged with geographic communication problems
- Selected CodeBeamer for its collaborative approach

itsmf UK BCS

---

---

---

---

---

---

---

---

**clearvision**

Questions

**clearvision**<sup>20</sup>

itsmf UK BCS

---

---

---

---

---

---

---

---

**clearvision**

Thank you

Gerald Tombs – [gtombs@clearvision-cm.com](mailto:gtombs@clearvision-cm.com)

**clearvision**<sup>21</sup>

itsmf UK BCS

---

---

---

---

---


---

---

---

**clearvision** Useful links

<http://csharp-source.net/open-source/project-management>  
<http://www.opensourcetesting.org/functional.php>  
<http://www.cmcrossroads.com>  
<http://hgbook.red-bean.com/>  
[http://www.laatuk.com/tools/reg\\_mgmt\\_tools.html](http://www.laatuk.com/tools/reg_mgmt_tools.html)

iSMF UK  **BCS**

---

---

---

---

---

---

---

---