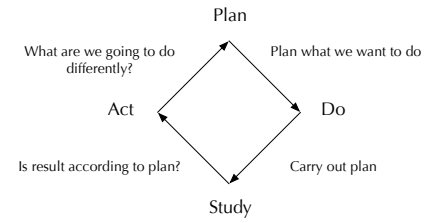


Evolutionary Configuration Management

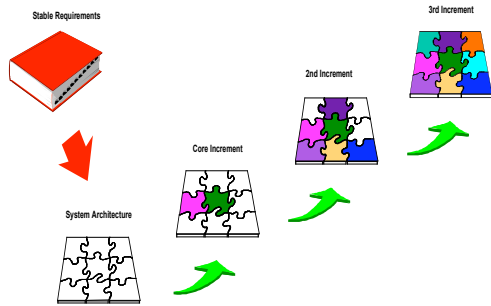
Richard Brooksby
Ravenbrook Limited
2004-10-05



Richard Brooksby, Ravenbrook Limited, 2004-10-05 for BCS CMSC "Agile versus Traditional", London, 2004-10-12
URL: /r/b/ravenbrook.com/doc/2004/10/09/evolutionary-con/diagram-graff42-1

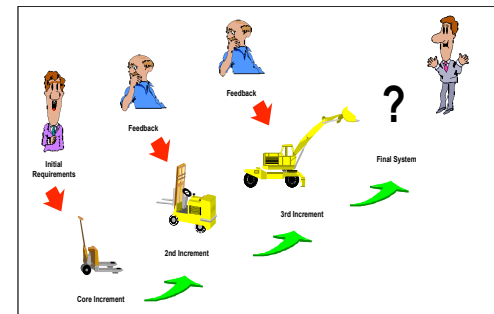


Incremental Delivery

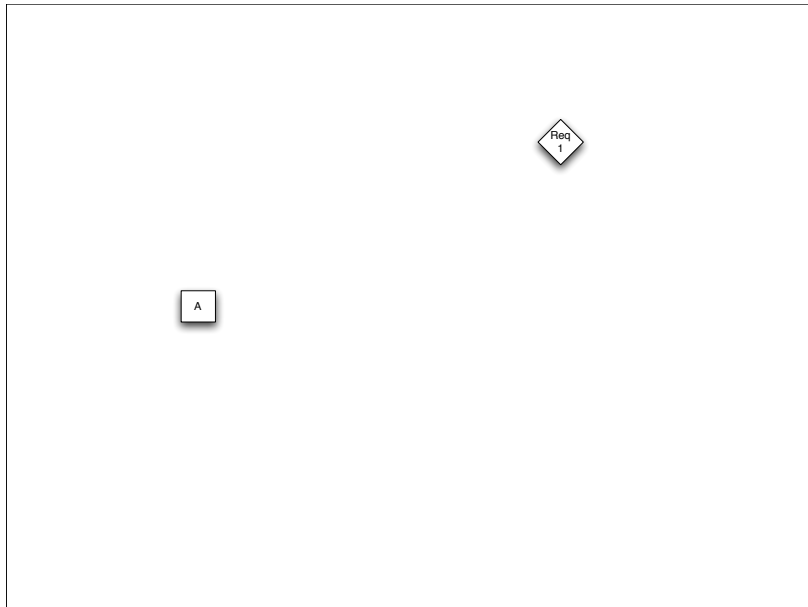


Source: Gilb.

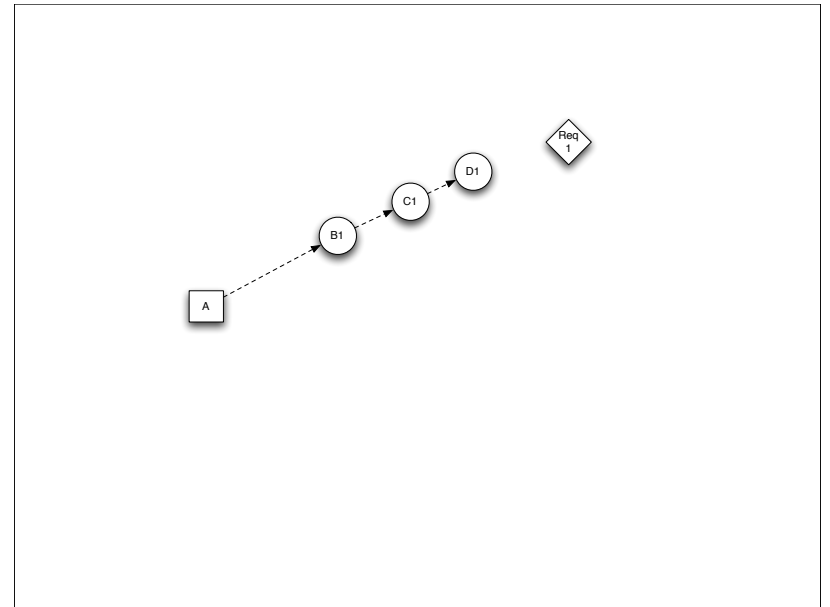
Evolutionary Delivery



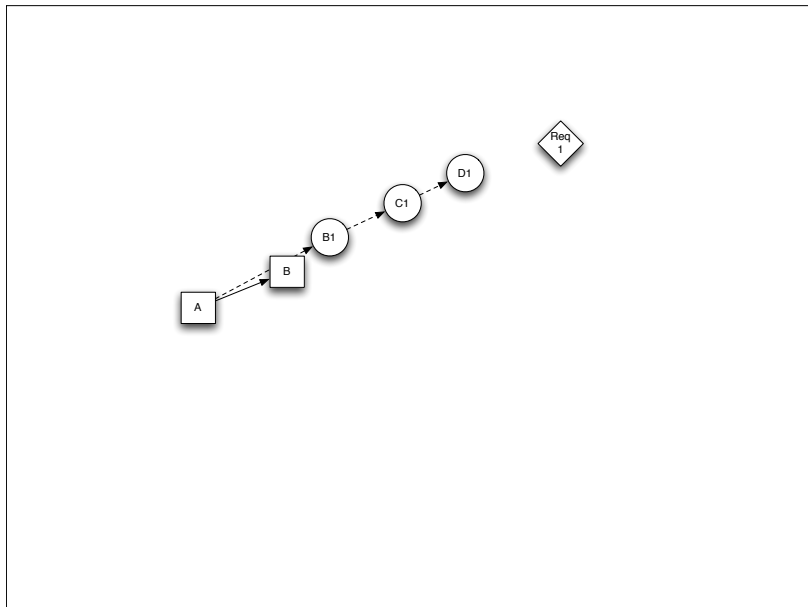
Source: Gilb.



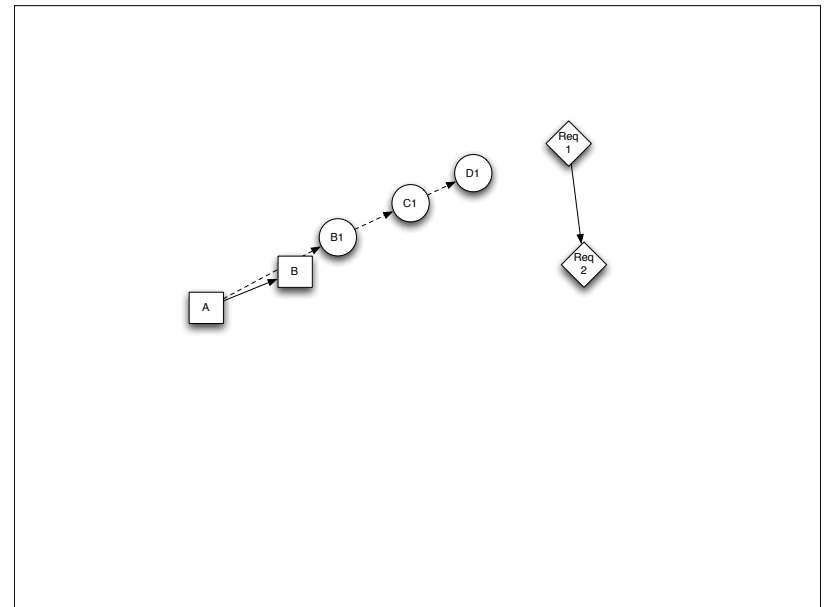
5



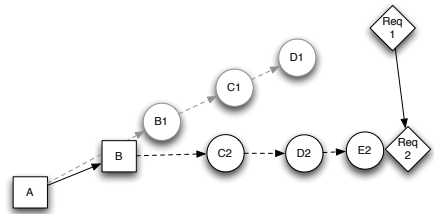
6



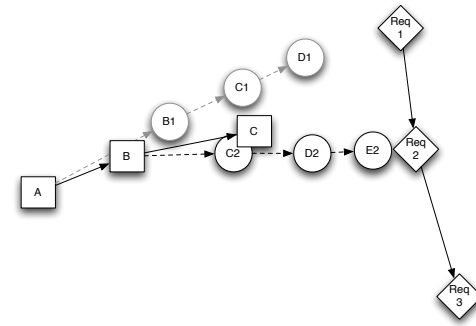
7



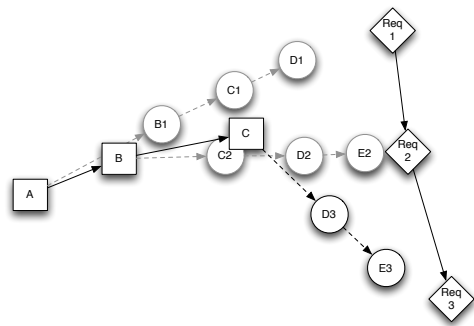
8



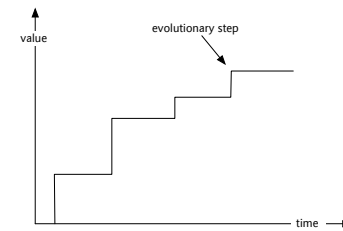
9



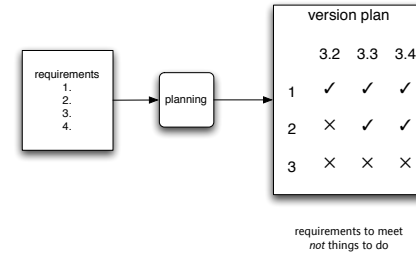
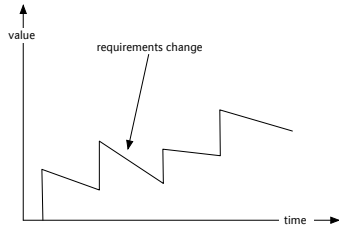
10



11



12



"The purpose of Software Configuration Management is to establish and maintain the integrity of the products of the software project throughout the project's software life cycle. Software Configuration Management involves identifying the configuration of the software (i.e., selected software work products and their descriptions) at given points in time, systematically controlling changes to the configuration, and maintaining the integrity and traceability of the configuration throughout the software life cycle." [CMM 1.1]

but why?

