

serena



Closed Loop Change & Configuration Management
14th April 2005

Mike Shaw, Serena

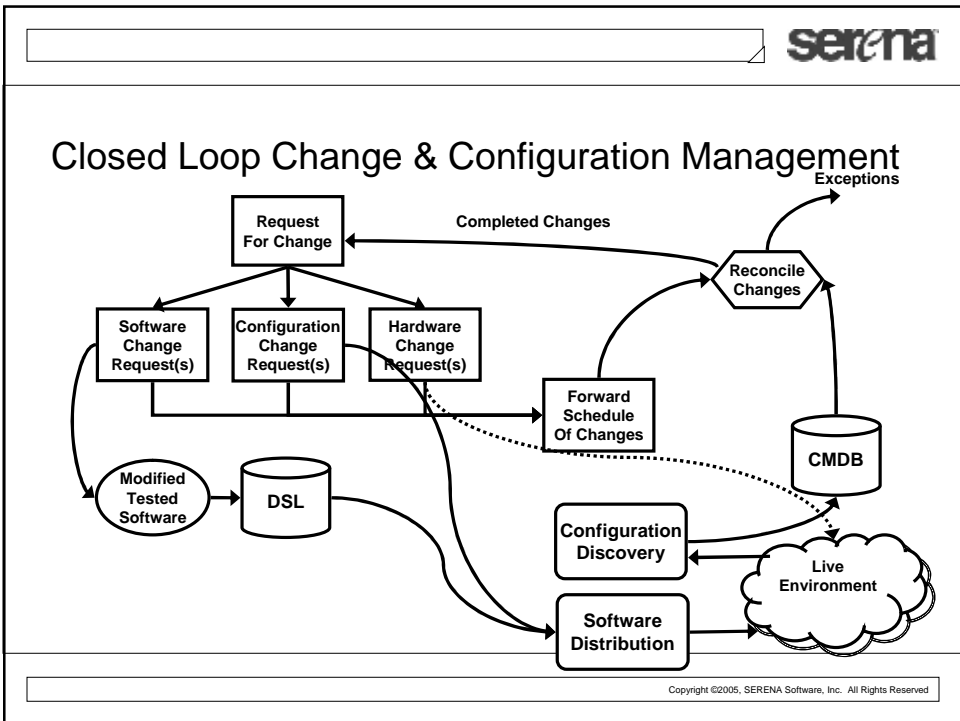
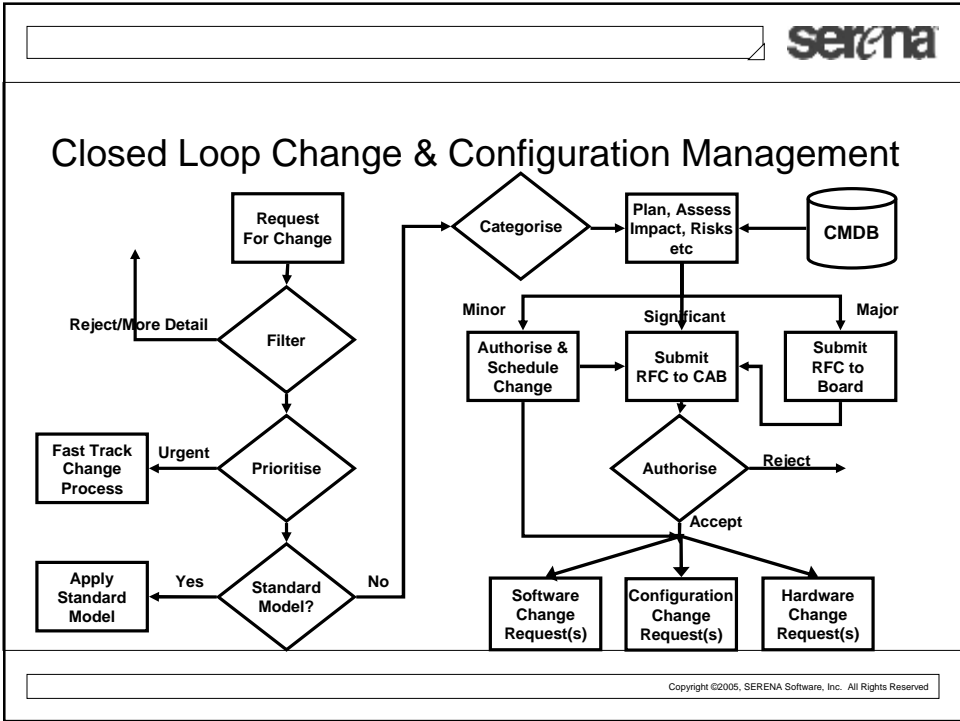
Copyright ©2005, SERENA Software, Inc. All Rights Reserved

serena

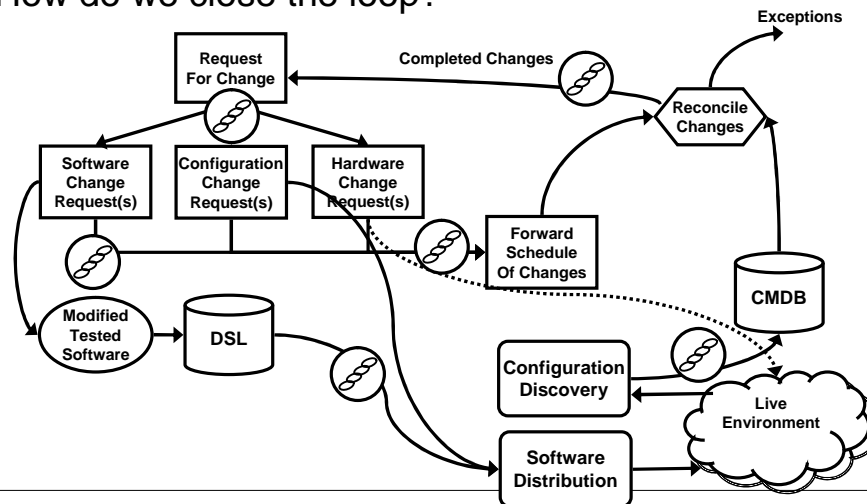
Common Situations

- § Unauthorised or untested change
- § Change silos
- § High to low level change disconnect
- § Inaccurate/missing configuration data
- § Poor software configuration management

Copyright ©2005, SERENA Software, Inc. All Rights Reserved



How do we close the loop?

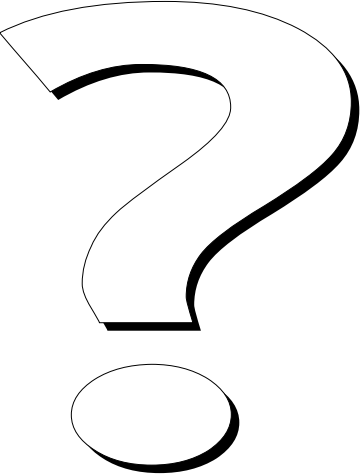


Benefits

- § Change visibility
- § Improve planning and coordination
- § Evidence of change completion
- § Detect unauthorised change
- § Detect change conflicts
- § Fewer change triggered incidents

serena

Any Questions?



Copyright ©2005, SERENA Software, Inc. All Rights Reserved

The image shows a slide with a header bar containing the 'serena' logo. The main content area features the text 'Any Questions?' followed by a large, stylized question mark. A footer bar at the bottom contains the copyright notice: 'Copyright ©2005, SERENA Software, Inc. All Rights Reserved'.